

MONTHLY MEMBERSHIP PROGRESS REPORT

LOCATION CALIFORNIA

District 4 C1

Results as of: 2/28/2023

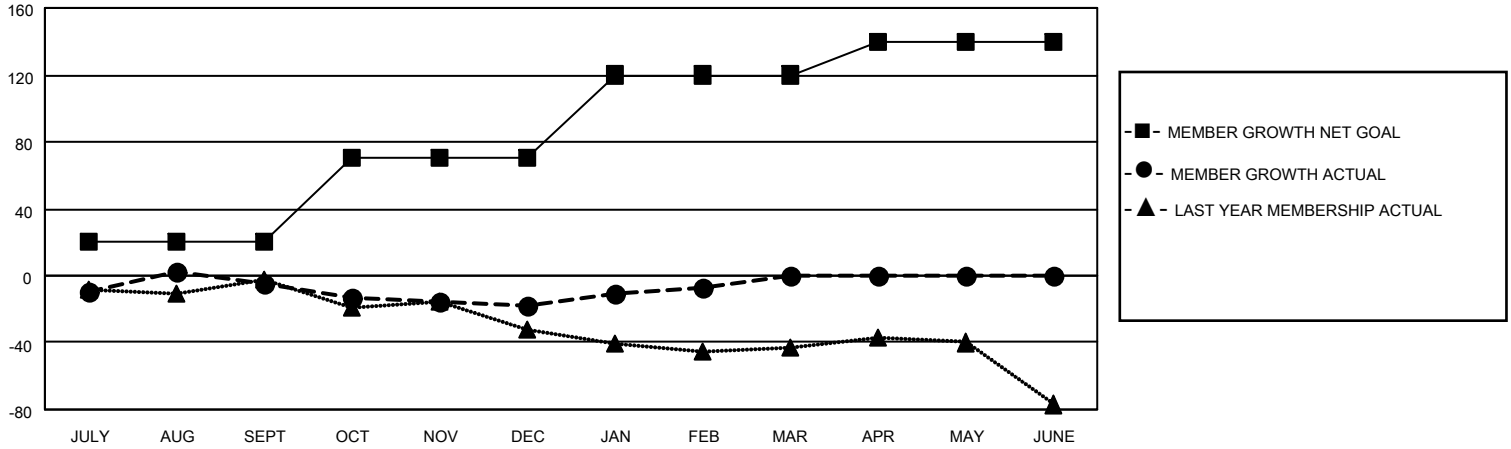
Clubs			
RESULTS FOR 2022-2023			
QUARTER	NEW CLUB GOAL	NEW CLUBS	DROPPED CLUBS
JULY/AUG/SEPT	1	0	0
OCT/NOV/DEC	1	0	0
JAN/FEB/MAR	1	0	0
APR/MAY/JUNE	1	0	0

Members			
RESULTS FOR 2022-2023			
QUARTER	MEMBER GROWTH NET GOAL	MEMBER GROWTH ACTUAL	DROPPED MEMBERS ACTUAL (including transfers)
JULY/AUG/SEPT	20	36	40
OCT/NOV/DEC	50	22	34
JAN/FEB/MAR	50	23	9
APR/MAY/JUNE	20	0	0

GOALS AND ACTUAL NEW CLUBS CUMULATIVE



GOALS AND ACTUAL MEMBERS CUMULATIVE



DROPPED CLUBS: 0

21 CLUBS OF 36 ADDED 1 OR MORE NEW MEMBERS

GENDER DISTRIBUTION

MALE	565 (63.41%)
FEMALE	326 (36.59%)
NON BINARY	0 (0.00%)
PREFER NOT TO ANSWER	0 (0.00%)

DROPPED MEMBERS

[CLICK HERE FOR CUMULATIVE MEMBERSHIP DATA](#)

DECEASED	9
CLUB CANCELLED	0
OTHER	74
TOTAL	83

TOTAL FAMILY UNIT MEMBERS	180
FAMILY MEMBERS PAYING HALF DUES	93